

# Influence of Spectral Density Distribution on Wave Parameters and Simulation in Time Domain

by

K.-F. Daemrich, S. Mai, N. Ohle , E. Tautenhain

## Abstract

Design works, especially for non-linear wave related problems, require information on the statistics of heights and periods of single waves in a wave train.

Whereas the RAYLEIGH-distribution is widely used and accepted for wave heights, period distributions have more variety. Apart from this, for more detailed investigations, statistical information on combinations of heights  $H$  and periods  $T$  can be helpful. Wave run-up e.g. is related to  $T \cdot \sqrt{H}$  and therefore the significant wave run-up  $R_{u2\%}$  should be calculated from  $(T \cdot \sqrt{H})_{2\%}$ , rather than from individual combinations of characteristic wave parameters as e.g.  $H_{1/3}$  and  $T_m$  or  $T_p$ .

Such parameters are usually not analysed in measurements and they cannot be taken from the widely used phase averaging numerical models like SWAN, which deliver only spectral information on the design sea state. Therefore, in this paper, time-series generated by linear superposition are analysed, and the influence of the spectral shape (TMA-spectra, double peak spectra) on the distributions of heights and periods is demonstrated. Furthermore wave run-up at sea dikes is investigated with this method and the usefulness of characteristic wave parameters in the design formula is discussed.

## 1. Introduction

Sea waves are irregular in time and space. The irregularity of the surface, from which all other relevant features (as orbital velocities, pressures etc.) have to be derived, can be analyzed or modelled either in time-domain or in frequency-domain.

Working in **time-domain**, the irregular wave train is seen as a sequence of individual waves, characterized by heights  $H$  and periods  $T$ . Usually these individual wave parameters are determined by zero-downcrossing definition. The statistics of the irregularity can be expressed as distributions of the probabilities of the parameters  $H$  and/or  $T$ . Characteristic mean values of these parameters (e.g.  $H_{1/3}$ ,  $T_{H1/3}$ ,  $T_m$ ) are used for characterisation of the sea state and in design procedures.

The irregular sea surface can also be seen as a composition or superposition of a number of sinusoidal wave components with different frequencies (the directional spread is not treated in this context). The decomposition of a time-series is performed by FOURIER-technique. The irregularity is expressed in the **frequency-domain** as wave spectra, if necessary with related phase information. Characteristic parameters can be calculated from the spectral moments (e.g.  $H_{m0}$ ,  $T_{0,2}$ ) or attributed to characteristic values of the spectrum (e.g.  $T_p$ ).

Both methods of analysis are related to simulation methods for design.

In time-domain, in principle each individual wave with height  $H$  and period  $T$  is seen as a regular wave with these parameters, although the shape of such an event is seldom symmetric in nature. With the help of wave theories or empirical knowledge, any effects related to waves can be calculated for individual wave events, and if necessary, a statistics of the result can be created.

In frequency-domain, each wave component is treated as independent. The effect of each component is formulated (on the basis of linear wave theory or empirical knowledge), and the overall effect is expressed as a spectrum of the result.

Both methods are valuable and necessary for the various design works related to wave problems. The simulation method in time-domain is mainly used for more non-linear processes (e.g. wave forces on structures, wave breaking, wave run-up at sloped structures). For more linear processes (e.g. diffraction, refraction), the superposition method in frequency-domain is the preferred tool.

The most common method today to get information on a design sea state is based on wave forecasting in combination with phase averaged numerical modelling of shallow water effects. Such models deliver only spectra of the sea state and/or characteristic spectral parameters.

Design methods in time-domain, however, require information on the statistics of heights and periods. Either, for a maximum wave, a related period has to be determined, or the complete statistics is needed.

The probability distribution of wave heights is well described in most cases by the RAYLEIGH-distribution, which can be seen as the universal distribution. The distribution of wave periods for standard spectra is generally narrower than the distribution of the heights. Under conditions of sea and swell at the same time, or deformation of the spectra due to shallow water effects, however, the period distribution might become broader. Insofar, a great uncertainty exists, related to wave periods.

Apart from this, for more detailed investigations, distributions of combined parameters of heights and periods can be helpful. Wave run-up e.g. is related to  $T \cdot \sqrt{H}$  and therefore the significant wave run-up  $R_{u2\%}$  should be calculated from  $(T \cdot \sqrt{H})_{2\%}$ , rather than from individual combinations of characteristic wave parameters as e.g.  $H_{1/3}$  and  $T_m$  or  $T_p$ . There is only limited information on such distributions and parameters.

To provide better information on wave period statistics or combined statistics of heights and periods, it seems consequent to use the superposition method and generate time-series, from which the requested parameters or distributions can be taken without any restrictions to standard types of spectra. This corresponds to the procedure of generating time-series for hydraulic model tests and phase resolving numerical models.

## 2. Time-series generation by superposition of wave components

The generation of a time-series by superposition is demonstrated for the example of a JON-SWAP-spectrum. Characteristic frequency-domain parameters are selected to be  $H_s = 4.0$  m with  $T_p = 8.0$  sec. The density distribution is calculated by the formula

$$S(f) = \frac{\alpha \cdot g^2}{(2\pi)^4 \cdot f^5} \cdot \exp\left[-\frac{5}{4}\left(\frac{f}{f_p}\right)^{-4}\right] \cdot \gamma \exp\left[\frac{-(f - f_p)^2}{2 \cdot \sigma^2 \cdot f_p^2}\right]$$

with

$$\gamma = 3,3 \quad \sigma_a = 0,07 \quad (f < f_p) \quad \sigma_b = 0,09 \quad (f \geq f_p)$$

and scaled by  $\alpha$  to result in  $H_s = 4.0$  m.  $H_s$  is calculated from the moment  $m_0 = \int S(f) \cdot f^0 \cdot df$ :

$$H_s = 4 \cdot \sqrt{m_0}$$

The spectral density distribution is shown in Fig. 2.1.

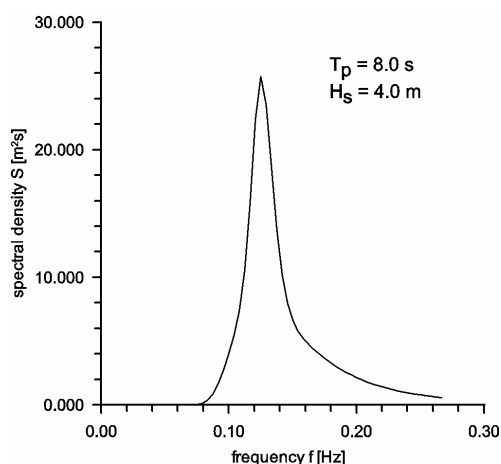


Fig. 2.1 JONSWAP-spectrum ( $H_s = 4.0$  m,  $T_p = 8.0$  sec)

The superposition requires discrete wave components, which are calculated from the spectral density distribution:

$$a(f) = \sqrt{S(f) \cdot 2 \cdot \Delta f} .$$

For that a  $\Delta f$  has to be selected, which controls the length (periodicity)  $T_0$  of the time-series to be generated:

$$T_0 = 1/\Delta f.$$

For the example  $\Delta f$  was chosen to be  $\Delta f = 0.004167$  Hz, which generates a time-series of 240 sec (30 peak periods). The plot of the amplitudes is given in Fig. 2.2.

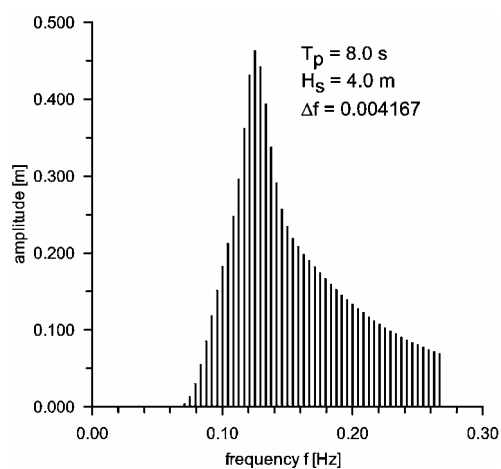


Fig. 2.2: Discrete spectrum of amplitudes

A phase angle information, which is selected to be a random value in the range  $\pm\pi$  is attributed to each component. Different seeds of random phase angles result in different time-series. The phase angles selected for this example are shown in Fig. 2.3. Finally the time-series, which is generated under these conditions, is shown in Fig. 2.4. From this time-series individual values of wave heights and periods can be calculated according to zero-downcrossing definition.

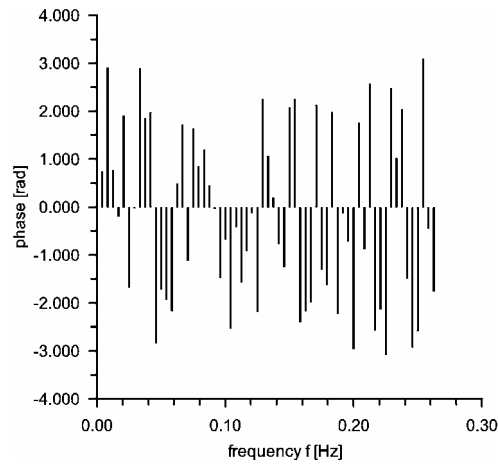


Fig. 2.3: Phase angles (random)

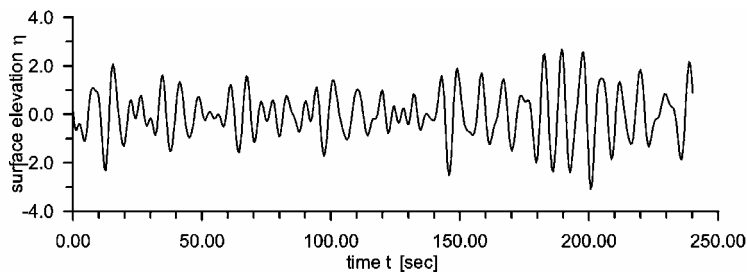


Fig. 2.4: Time-series related to the discrete amplitude spectrum (Fig. 2.2) and the selected phase angles (Fig. 2.3)

### 3. Wave height and period distributions for JONSWAP- and TMA-spectra

The necessary calculations related to the superposition model for time-series generation and analysis of the wave parameters according to zero-crossing definition were performed in MATLAB.

To demonstrate the results, time-series with characteristic parameters  $H_{m0} = 4$  m and  $T_p = 8$  sec with a duration of  $341 \cdot T_p = 45.5$  min were selected exemplarily. The realization with a peak enhancement factor of 3.3 (mean for JONSWAP) and a certain random number seed (state 400) resulted in a time-series with 416 individual wave events. The scatter diagram of the combinations of heights  $H$  and periods  $T$  is shown in Fig. 3.1.

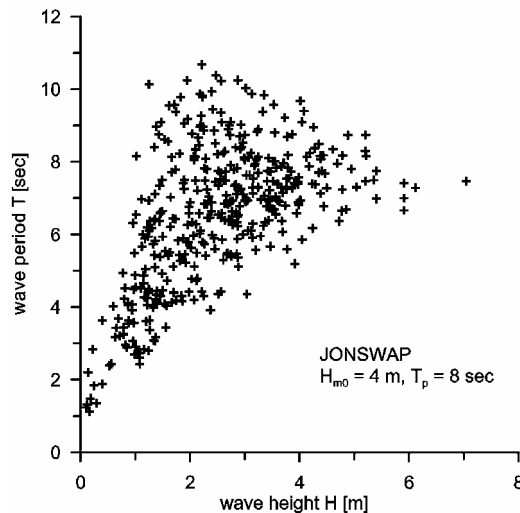


Fig. 3.1: Scatter diagram of heights and periods

The data show the typical range of periods for the various wave heights. Up to about the mean wave height, the range of periods is about proportional to the wave heights. For larger waves the range of periods decreases, and the highest waves tend to have periods in the order of the mean period or the peak period.

The distribution of the wave heights is shown in Fig. 3. 2. For comparison, the RAYLEIGH-distribution is given, which does not fit perfectly, but relatively good.

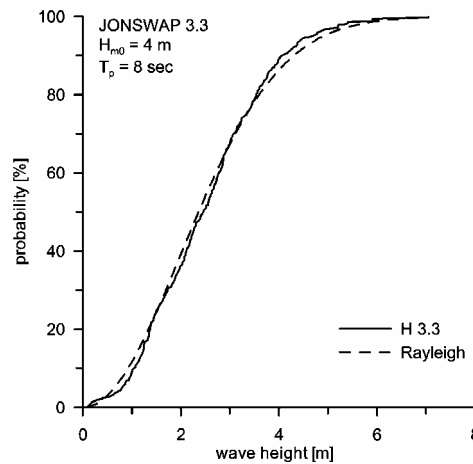


Fig. 3.2: Distributions of wave heights

The distributions of wave periods is shown in Fig. 3.3. Again the RAYLEIGH-distribution is given for comparison. It can be clearly stated, that this distribution does not at all fit to the data.

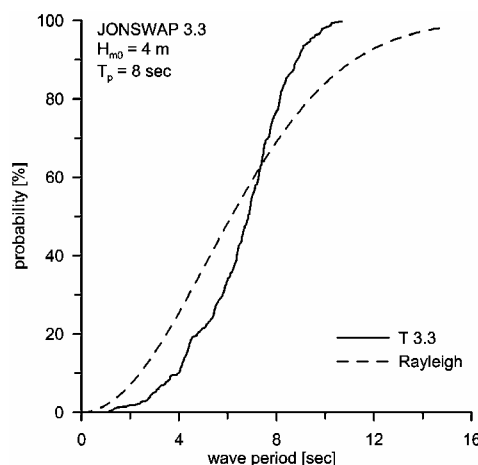


Fig. 3.3: Distributions of wave periods

To show the influences of spectral shapes, wave height and period distributions for three JONSWAP-spectra with different peak enhancement factors  $\gamma = 1, 3.3$  and  $7$  are compared (a peak enhancement factor of  $\gamma = 1$  corresponds to the PIERSON-MOSKOWITZ shape). Furthermore a TMA-spectrum for the same characteristic wave parameters in a water depth  $d = 10$  m ( $d/L_p = 0.1$ ) is included. All spectra have the same length of the time-series, however, contain different numbers of waves. To make the data comparable, results are presented as relative wave heights  $H/H_m$  and  $T/T_m$  ( $H_m$  and  $T_m$  are the mean wave heights and periods).

In Fig. 3.4 and 3.5 height and period distributions of the various spectra are plotted, together with the RAYLEIGH-distribution as reference.

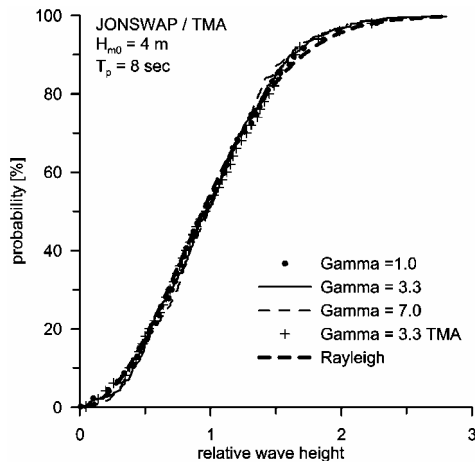


Fig 3.4: Distributions of wave heights for various spectra

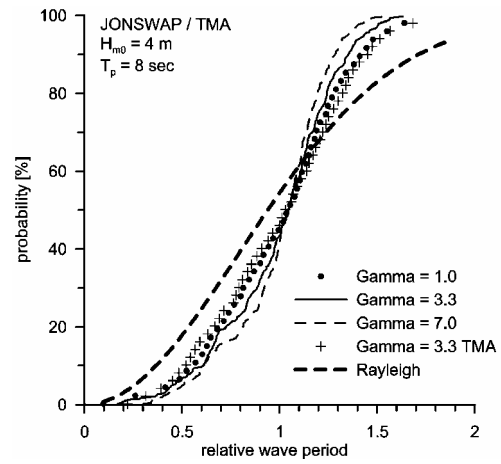


Fig. 3.5: Distributions of wave periods for various spectra

The distributions of the wave heights are almost equal. That confirms the RAYLEIGH-distribution to be reasonable for those conditions. The distributions of the wave periods are narrower for JONSWAP-spectra with higher peak enhancement factors. The distribution of the wave periods of the TMA-spectrum is wider than the corresponding JONSWAP-spectrum.

#### 4. Influences of different random seeds and length of the time-series

The above results are produced from time-series of about 400 waves. All time-series were generated from the same set of random phases. To assess the influence of the randomness and the statistical stability, for the mean JONSWAP-spectrum ( $\gamma = 3.3$ ) two more time-series with different random phases have been generated. Whereas the distributions of the wave heights were almost identical, the distributions of periods came out to have clear deviations around a mean trend (Fig. 4.1). Using time-series of twice the length with about 800 wave events improved the situation (Fig. 4.2), but only time-series of 4 times the length (about 1600 waves) resulted in an acceptable course of the period distribution. (Fig. 4.3).

For comparison, in Fig. 4.3 data from a set of 10753 wave events are plotted to demonstrate that a stable shape of the distribution is reached.

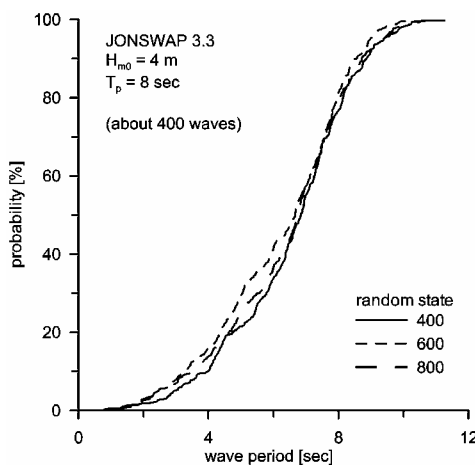


Fig. 4.1: Influence of number of waves and random phase seed on the period distribution (about 400 waves)

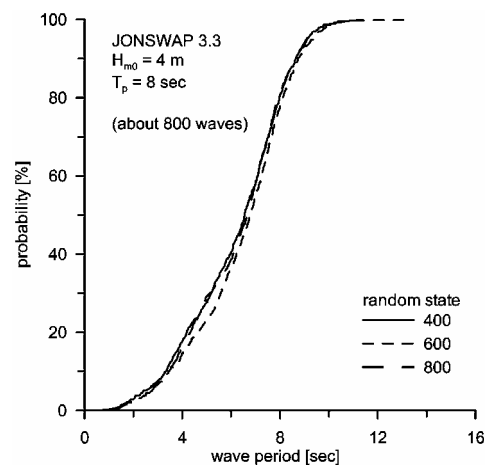


Fig. 4.2: Influence of number of waves and random phase seed on the period distribution (about 800 waves)

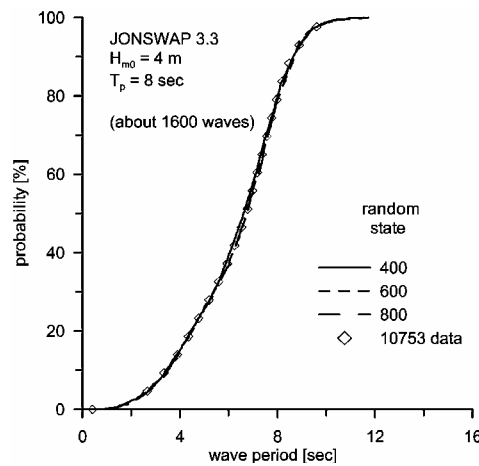


Fig. 4.3: : Influence of number of waves and random phase seed on the period distribution (about 1600 waves)

### 5. Double-peak spectra

In coastal locations, especially in relative shallow water, design spectra may not be of standard type JONSWAP or TMA. To demonstrate the influence of non-standard wave spectra, two double-peak spectra are investigated exemplarily.

The spectra are superposed from two JONSWAP-spectra. For the reference spectrum (spectrum 1) the peak period is kept  $T_p = 8$  sec (peak frequency  $f_p = 0.125$  Hz) as before. For the second spectrum, the peak is selected to be  $f_{p2} = 0.5 \cdot f_{p1}$  for the first case, and  $f_{p2} = 1.5 \cdot f_{p1}$  for the second case. In both cases the energy of the secondary spectrum is selected to be 50 % of the reference spectrum, but the final spectra have still the same significant wave height  $H_{m0} = 4$  m. The shapes of the spectra are shown in figures 5.1 and 5.2.

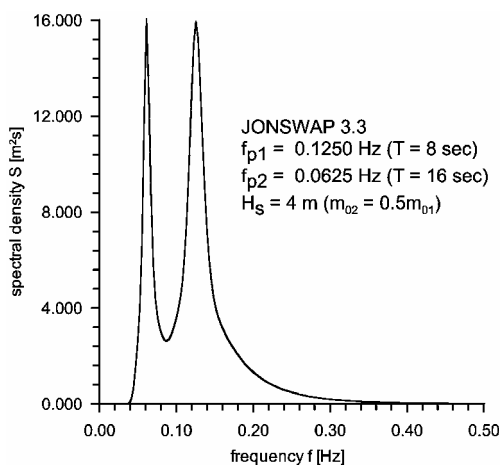


Fig. 5.1: Double-peak spectrum  
 $(f_{p2}/f_{p1} = 0.5)$

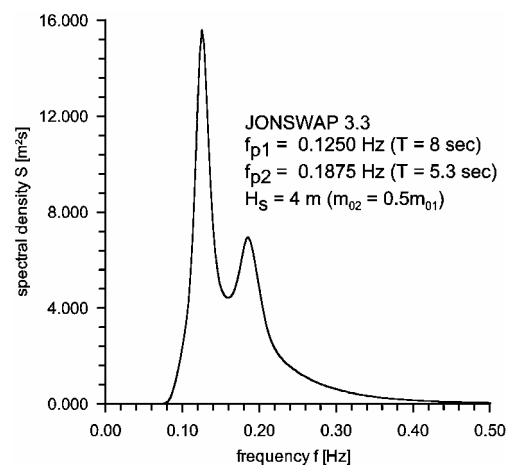


Fig. 5.2: Double-peak spectrum  
 $(f_{p2}/f_{p1} = 1.5)$

Wave heights still follow the RAYLEIGH-distribution as all other spectra do. The distributions of the periods, however, deviate, as shown in Fig. 5.3 (absolute periods) and Fig. 5.4 (relative periods). In both cases of double peak spectra, the distributions are broader and the higher periods are more frequent, compared to the plain JONSWAP-spectrum.

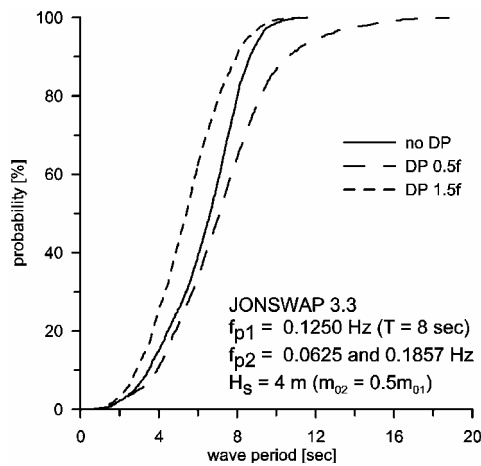


Fig. 5.3: Distributions of wave periods in double-peak spectra compared to plain JONSWAP-spectrum

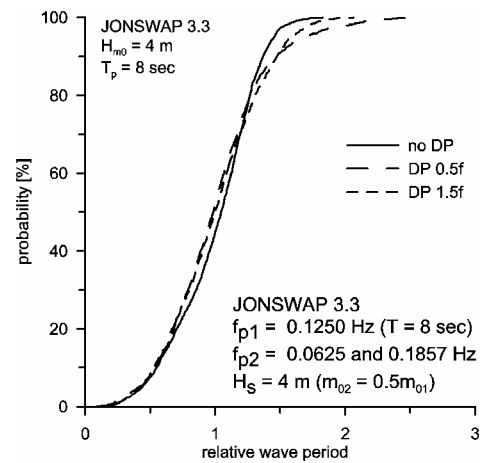


Fig. 5.4: Distributions of relative wave periods in double-peak spectra compared to plain JONSWAP-spectrum

## 6. Application to simulation of wave run-up of irregular waves at sloped sea dikes

### 6.1 Some remarks on wave run-up at sloped structures

The influence of wave height and period statistics on design will be illustrated with the example of wave run-up at sea dikes, or more general, sloped structures.

For a certain range of wave steepness and slope angle  $\alpha$  the wave run-up  $R$  of regular waves can be characterized by the formula

$$R = 1.27 \cdot \sqrt{H} \cdot T \cdot \tan \alpha$$

which is based on HUNT (1959).

For irregular waves usually the parameter  $R_{u2\%}$  is used as design value for German sea dikes. The common design formula for  $R_{u2\%}$  can be written in the following form:

$$R_{u2\%} = a \cdot \sqrt{H_{\text{char}}} \cdot T_{\text{char}} \cdot \tan \alpha$$

$H_{\text{char}}$  and  $T_{\text{char}}$  are characteristic wave parameters from time-series or spectral analysis.

$H_{\text{char}}$  is generally accepted to be the significant height  $H_s$  (either  $H_{1/3}$  or  $H_{m0}$ ). For  $T_{\text{char}}$  the mean periods  $T_m$  or  $T_{0,2}$ , the significant period  $T_s = T_{H1/3}$  or the peak period  $T_p$  have been used in the past. Recently VAN GENT (VAN GENT, 1999) recommended the spectral period  $T_{-1,0}$  to be used in the design formula for wave run-up in irregular waves for the first time.

Generally the coefficient  $a$  is determined by hydraulic model tests in irregular waves, using standard spectra and various characteristic wave parameters. For a combination of characteristic parameters  $H_{1/3}$  and  $T_p$  the coefficient is widely accepted to be around  $a = 1.87$  (or  $1.5 \cdot \sqrt{g/2\pi}$ ). Using other combinations like  $H_{1/3}$  and  $T_m$  or  $H_{m0}$  and  $T_{-1,0}$  with an other coefficient is possible in principle and has been used by various authors.

The fact, that the relations between wave period parameters are not at all constant for various types of wave spectra, highlights already that we have a principle problem with such design formulae as long as we do not have a real problem depending "significant" combination of wave parameters (strictly speaking, such a design formula requires that the relation between the distribution of individual wave parameters and the distribution of wave run-ups is equal for all types of sea states or spectra, which seems not to be realistic, when we consider the results from the previous chapters). The scatter of the reference data, from which by curve



fitting and/or correlation the “best” coefficient  $a$  has to be established, is a further hint to the basic problem.

The situation is getting worse when the design spectra are not standard spectra, but e.g. double-peak spectra, where especially the today most preferred period parameter  $T_p$  is questionable. But also the latest parameter  $T_{-1,0}$  is not without doubts.

Instead of trying various combinations of characteristic parameters it could be consequent (looking to the physical relationship for the wave run-up in regular waves) to relate the design wave run-up  $R_{u2\%}$  to a (combined) statistical parameter  $(\sqrt{H} \cdot T)_{2\%}$ .

However, this is not a standard parameter in wave analysis and there are not many hydraulic model investigations, where this parameter has been calculated.

Therefore, in this paper, the problem will be investigated on the basis of wave time-series generated by linear superposition as described in the previous chapters.

The straight forward way would be, to attribute to each individual irregular wave event a wave run-up, calculated from the related  $H$  and  $T$  according to the formula for regular waves

$$R = 1.27 \cdot \sqrt{H} \cdot T \cdot \tan \alpha$$

and to find  $R_{u2\%}$  from the results of the simulation. This is what some previous authors did or recommended (SAVILLE, 1962; BATTJES, 1971).

In case of wave run-up at sloped structures, however, the situation is more complex. The wave run-up in irregular waves is strongly influenced by the wave run-down from the previous wave run-up event. TAUTENHAIN (1981, 1982) has done intensive investigations in hydraulic models and theory on this topic. He developed the only method to consider the pre-wave influence on wave run-up. According to his results, the wave run-up  $R$  generated by an individual wave event can be calculated from

$$R_n = \tilde{R}_n \cdot \sqrt[3]{2 \cdot \Psi - (R_{n-1} / \tilde{R}_n)^3}$$

with

$\tilde{R}_n$  = wave run-up in the  $n^{\text{th}}$  wave without pre-wave influence

$R_n$  = wave run-up in the  $n^{\text{th}}$  wave with pre-wave influence

$\Psi$  = coefficient to be verified by measurements (according to theory:  $\Psi = 1$ )

This methodology is used for the theoretical calculations of the wave run-up statistics in the following.

This method leads to an increase of the significant wave run-up  $R_{u2\%}$  and to a reduction of the number of wave run-up events, compared to the number of wave events, what is confirmed by hydraulic model tests.

## 6.2 Influence of various spectra on wave run-up

Calculating wave run-ups first **without** pre-wave influence, results in the wave run-up distributions for standard JONSWAP-spectra ( $\gamma = 1, 3.3$  and  $7$ ) and a TMA-spectrum ( $\gamma = 3.3, d = 10$  m) shown in Fig. 6.1. It is to be seen clearly, that for JONSWAP-spectra with various peak enhancement factors the significant wave run-up  $R_{u2\%}$  is almost equal ( $R_{u2\%} \approx 3.9$  m), although the mean wave run-ups are quite different. The TMA-spectrum comes out with a slightly different  $R_{u2\%}$  (about 6% less).

In Fig. 6.2 the corresponding results are shown, when wave run-up is calculated **with** pre-wave influence. For a number of wave events, the calculation results in a negative wave run-up, which has to be interpreted as “no wave run-up”. In the diagrams only the positive results are plotted, however, the frequency is still related to the number of wave events.

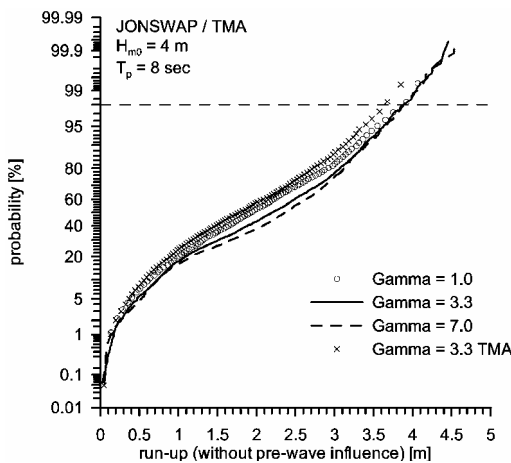


Fig. 6.1: Run-up distributions for JONSWAP and TMA-spectra without pre-wave influence

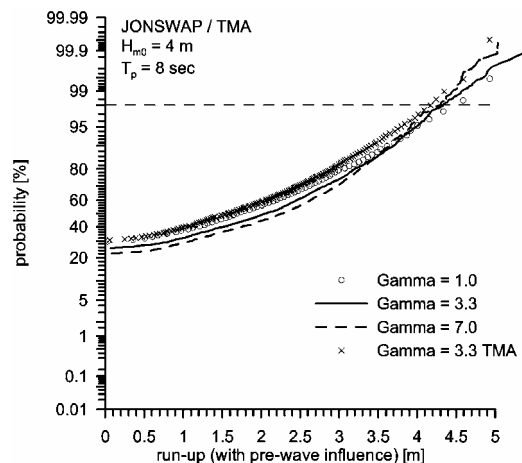


Fig. 6.2: Run-up distributions for JONSWAP and TMA-spectra with pre-wave influence

Taking into account pre-waves, there are slightly different values of  $R_{u2\%}$ . The value of  $R_{u2\%}$  is in the range of  $R_{u2\%} \approx 4.2 \div 4.5$  m.

Using the design formula with the coefficient  $a = 1.87$ , and  $H_{m0}$  and  $T_p$  as characteristic wave parameters would result in  $R_{u2\%} = 5$  m. Insofar the results are possibly about 10 to 15% below results reported from hydraulic model tests.

The reason is not yet quite clear. However, the initial coefficient (or the assumed trend) for wave run-up in regular waves (where the results strongly depend on) is somewhat questionable, as TAUTENHAIN has measured about 10% higher wave run-ups in his hydraulic model tests, compared to the results published by HUNT. This would explain a part of the deviations. On the other hand, the pre-wave method is still subject of investigations.

Whereas the influence of various types of JONSWAP- and TMA-spectra was moderate, results from double-peak spectra show, that unrealistic results are to be expected, when the design formula for wave run-up is applied under these conditions in the usual way (Fig. 6.3 and 6.4).

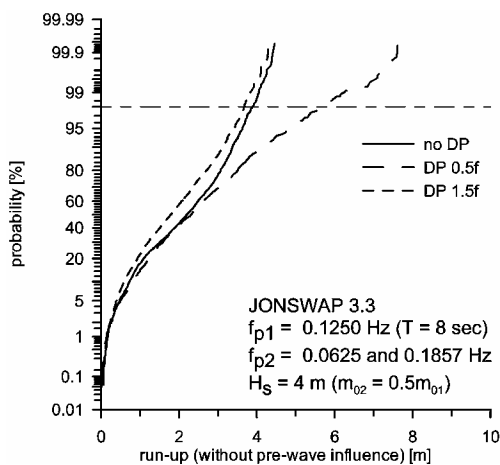


Fig. 6.3: Run-up distributions for double-peak spectra without pre-wave influence

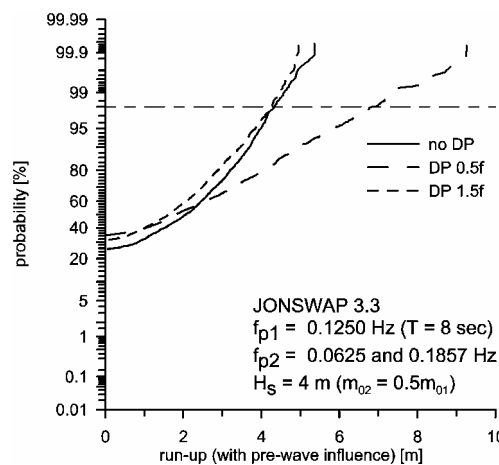


Fig. 6.4: Run-up distributions for double-peak spectra with pre-wave influence

### 6.3 Usefulness of characteristic wave parameters in the design formula for wave run-up

On the basis of simulated waves and wave run-ups the related coefficients  $a$  can be calculated for various combinations of characteristic wave parameters. To give an impression on the influence of spectral shape, the variation of the coefficient  $a$  is calculated for TMA-spectra in various water depths from deep water ( $d/L_{0p} = 0.5$ ) to shallow water ( $d/L_{0p} = 0.05$ ) and for double-peak spectra in deep water, with variations of the frequency of the second peak in the range  $f_{p2}/f_{p1} = 0.1 \div 2.0$ . Exemplarily the energy of the second peak is selected to be 50% of the reference spectrum.

To find the related coefficient  $a$ , the design formula for wave run-up is arranged as follows:

$$R_{u2\%} = a \cdot \sqrt{H_{char}} \cdot T_{char} \cdot \tan \alpha \Rightarrow a = \frac{R_{u2\%}}{\sqrt{H_{char}} \cdot T_{char} \cdot \tan \alpha}$$

The variation of the coefficient  $a$  is determined for the following combinations of characteristic wave parameters

$H_{m0}$	$T_p$
$H_{m0}$	$T_{0,2}$
$H_{1/3}$	$T_{-1,0}$
$H_{1/3}$	$T_m$

and for the favoured combined parameter

$$(\sqrt{H} \cdot T)_{2\%}$$

The results are plotted for the variations of the TMA-spectra in Fig. 6.5 and for the double-peak spectra in Fig. 6.6.

From the course of the coefficients  $a$  the usefulness can be judged. For standard TMA-spectra the “best” parameters are  $T_p$  (in combination with  $H_{m0}$ ) and the combined parameter  $(\sqrt{H} \cdot T)_{2\%}$ .

For the double-peak spectra all parameters, except the combined parameter  $(\sqrt{H} \cdot T)_{2\%}$  are not at all close to constant. The period parameter  $T_{-1,0}$  (in combination with  $H_{m0}$ ) is the relatively best of the usual period parameters, when the whole investigated range is considered. For secondary peaks at frequencies higher than the peak of the reference spectrum, however, the peak-period parameter  $T_p$  is more stable.

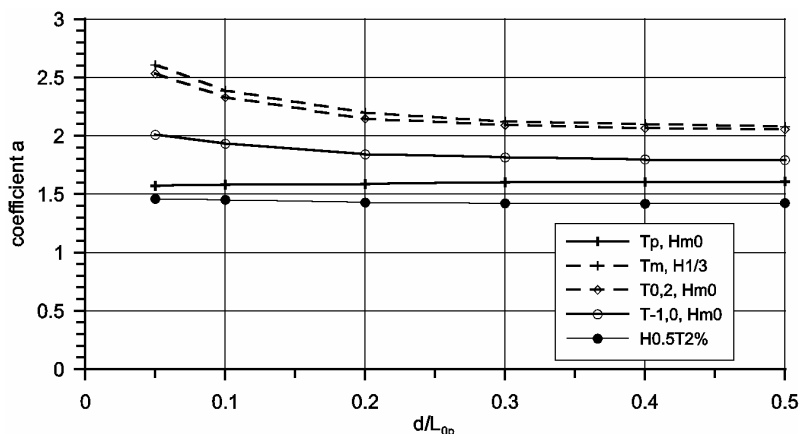


Fig. 6.5: Variation of coefficient  $a$  with water depth (TMA-spectra)

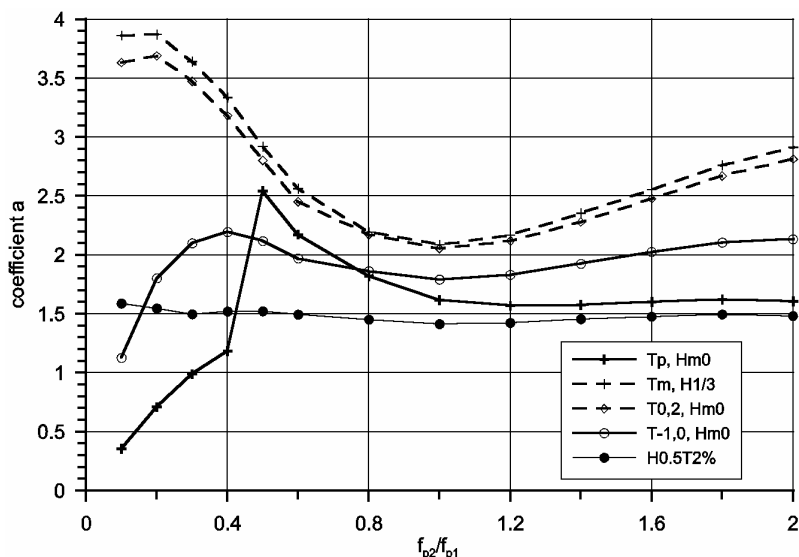


Fig. 6.6: Variation of coefficient a with frequency of the second peak ( $m_{02} = 0.5 \cdot m_{01}$ )

## 7. Further research

The linear superposition method should be extended to non-linear superposition (e.g. by the LAGRANGEian method, see WOLTERING and DAEMRICH, 2004) and checked by measurements in nature and/or hydraulic model tests. The handling of “random” phase setting has to be investigated with respect to getting distributions of wave heights around the breaker zone different from the RAYLEIGH-distribution.

## 8. References

- BATTJES, J. A. (1971): Run-up Distribution of Waves Breaking on Slopes. Proc. ASCE, Journal of the Waterways, Harbors and Coastal Engineering Division, Vol. 97, No.WW1, 1971
- HUNT, I. A. (1959): Design of Seawalls and Breakwaters. Proc. ASCE, Journal of the Waterways and Harbors Division, Vol. 85, No.WW3, 1959
- SAVILLE, T., Jr. (1962): An Approximation of the Wave Run-up Frequency Distribution. Proc. 8<sup>th</sup> International Conference on Coastal Engineering, Mexico, 1962
- TAUTENHAIN, E. (1981): Der Wellenüberlauf an Seedeichen unter Berücksichtigung des Wellenaufbaus – Ein Beitrag zur Bemessung. Mitt. des Franzius-Instituts f. Wasserbau und Küsteningenieurwesen, Univers. Hannover, Heft 53, 1981
- TAUTENHAIN, E., KOHLHASE, S., PARTENSKY, H.W. (1982): Wave Run-up at Sea Dikes Under Oblique Wave Approach. Proc. 18<sup>th</sup> International Conference on Coastal Engineering, Cape Town, 1980
- VAN GENT, M.R.A. (1999): Wave run-up and wave overtopping for double peaked wave energy spectra. Rep. H3351, Delft Hydraulics, Delft, The Netherlands, 1999
- WOLTERING, S., DAEMRICH, K.-F. (2004): Nonlinearity in Irregular Waves from Linear LAGRANGEian Superposition. Proc. 29<sup>th</sup> International Conference on Coastal Engineering, Lisbon, 2004